



\$1,243,165*

Michael Depalo
 0413 411 935 | 13 64 69
 mdepalo@domainehomes.com.au

TREVI 21
 TRADITIONAL FACADE

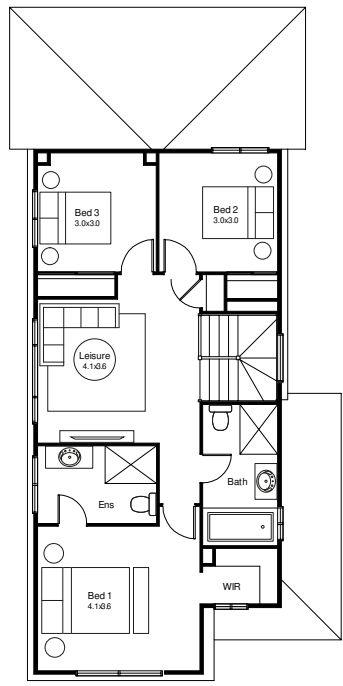
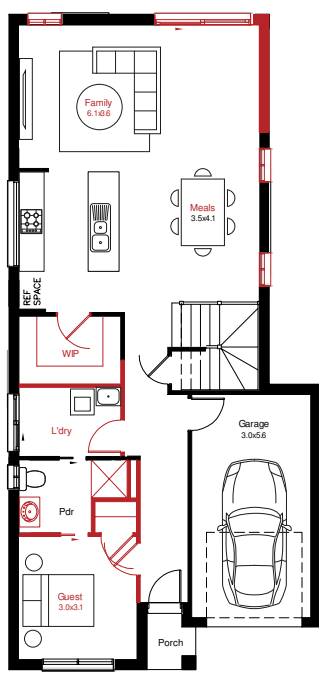


Lot 4533 Steeplechase Street,
 Box Hill, The Hills of Carmel Estate

Home Size: 194.3m²
 Land Size: 300m²

HOUSE AND LAND PACKAGE INCLUSIONS

- Lifetime Structural Guarantee
 - Hybrid steel frame
 - Floor coverings
 - 20mm stone kitchen benchtop
 - Flyscreens to opening windows
 - Induction cooktop
 - Fully ducted Air Conditioning
 - Soft close drawers and doors to kitchen and bathroom
 - Double glazed windows
 - Colourbond roof
 - 6.6kW Solar
- And much, much more...



 4
  2
  3
  1

*Facade image may depict features not included in the package prices shown such as render, tiling, lighting, roof covering, timber decking and landscaping. Plans are subject to approval by the Principal Developer and Local Authorities. Domaine Homes NSW reserves the right to withdraw or alter this package at any time without notice. Allowance for site costs included, pricing is subject to change without notice. Domaine Homes NSW is not the owner of the land and is not responsible for final site dimensions or registration times. All information given at this time is believed to be correct.