



HOME SIZE: 250.7M²

LAND SIZE: 300M²

🛏️ 4 🚿 3 📏 2.5 🚗 2

\$1,318,715*

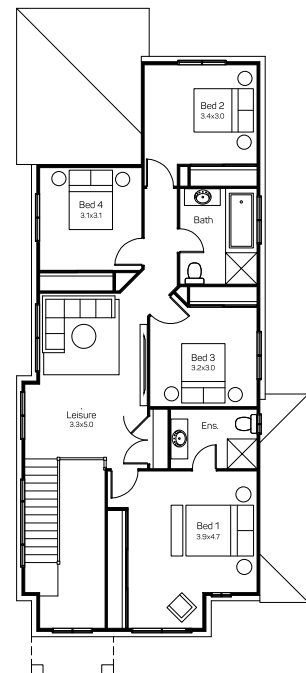
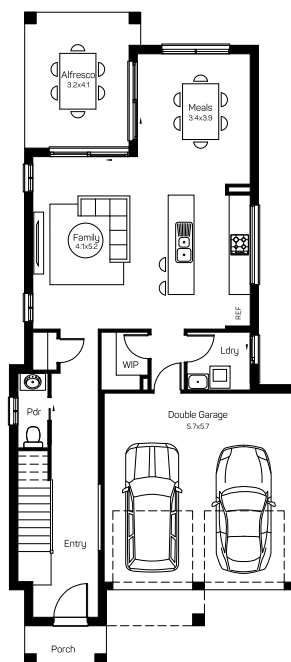
**TURN KEY
PACKAGE**

*T&C's apply

BARCELONA 27 TRADITIONAL FACADE
Box Hill, The Hills of Carmel Estate

HOUSE AND LAND PACKAGE INCLUSIONS

- Lifetime Structural Guarantee
 - Hybrid Steel Frame
 - Floor coverings Included
 - Blinds and Flyscreens to Windows
 - 900mm Stainless Steel Oven, Cooktop and Rangehood
 - Stainless Steel Dishwasher
 - 20mm Stone benchtops to Kitchen with soft close drawers and doors
 - 20mm Stone benchtops to Bathrooms
 - Automatic Garage Door
 - Fully Ducted Airconditioning
 - Driveway, Turf, Letterbox and Fencing Included
 - *Current promotional discount already applied.
- And much, much more...



Adam Gerrard | AGerrard@domainehomes.com.au | 13 64 69

*Facade image may depict features not included in the package prices shown such as render, tiling, lighting, roof covering, timber decking and landscaping. Plans are subject to approval by the Principal Developer and Local Authorities. Domaine Homes NSW reserves the right to withdraw or alter this package at any time without notice. Allowance for site costs included. pricing is subject to change without notice. Domaine Homes NSW is not the owner of the land and is not responsible for final site dimensions or registration times. All information given at this time is believed to be correct.