



LOT 4470

GROVE 28 HOUSE & LAND PACKAGE

INCLUSIONS:

- 7 Star BASIX building requirements
- Avoca facade option
- Fully Ducted Air Conditioning
- 20mm stone benchtops to Kitchen & Bathroom
- 2590mm ceilings
- 20 x LED downlights
- Concrete driveway



4 BED



2.5 BATH



2 CAR

HOUSE SIZE 258.27 M²

LAND SIZE 375 M²

\$1,364,900 (PACKAGE PRICE)

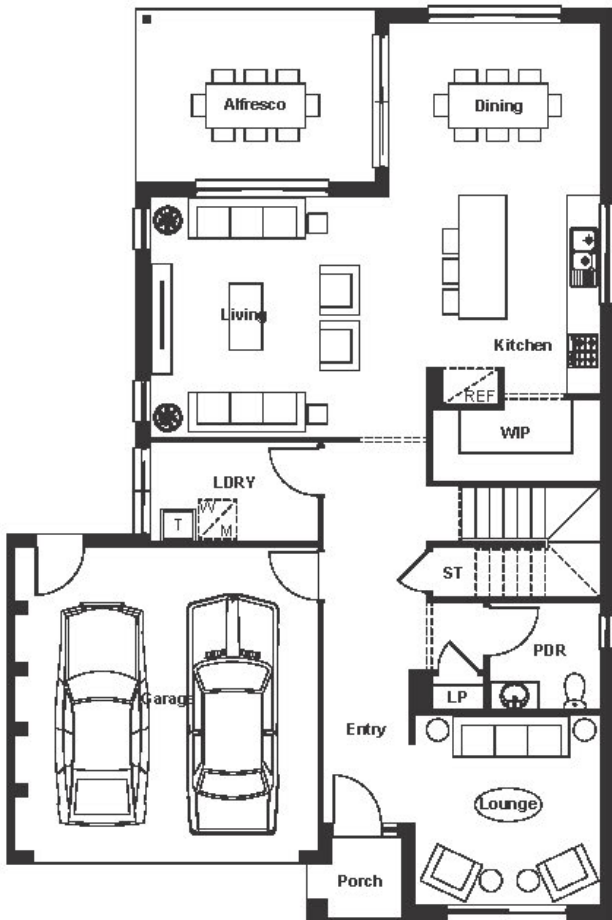
\$464,900 (HOUSE PRICE)

\$900,000 (LAND PRICE)

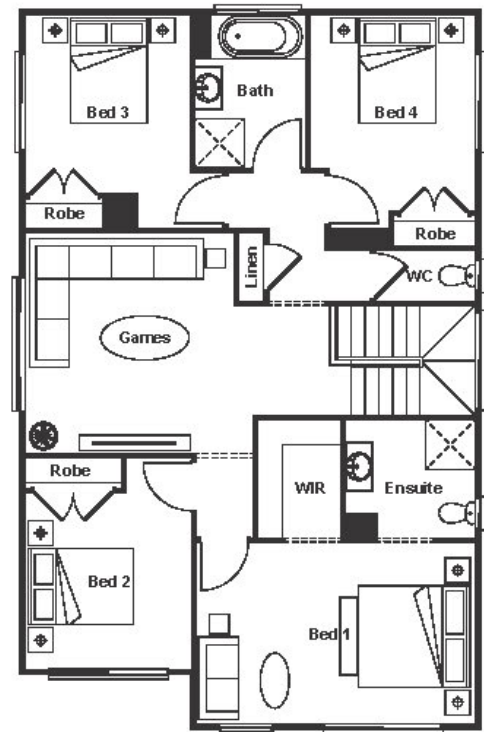
1800 227 635
TheHillsOfCarmel.com.au

Disclaimer: Final design and colour scheme subject to Developer approval. DH Box Hill Pty Ltd is only responsible for sale of land. For building contract, please refer to builder's representative. The developer and all other related companies do not make any representations or give any warranties that the information set out in this document is or will remain accurate or complete at all times and they disclaim all liability for harm, loss, costs, or damage which arises in connection with any use or reliance on the information.





GROUND FLOOR



FIRST FLOOR