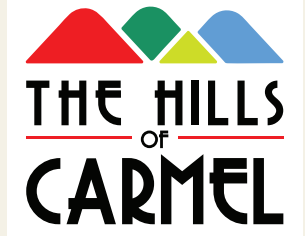


LOT 7507 | \$1,180,000

*Guaranteed
Fixed Price

18 Northlands St, Box Hill, NSW 2765



Included

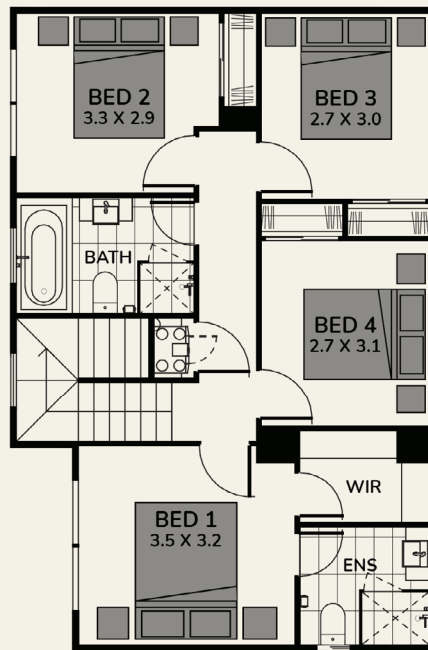
Landscaping
Driveway
2.6m High Ceiling
Ducted Air-Con
Quality Appliances

A modern two-story house with a brick and white facade, a dark roof, and a garage. The house has large windows and a covered entrance. A mailbox with the number 7507 is visible in the foreground.

MOVE IN MID 2024!
UNDER CONSTRUCTION!

4 BED | 2.5 BATH | 1.5 CAR
251M² LAND | 176.8M² HOUSE

All in One
CARMEL ONE
- COMPLETE HOME -



FIRST FLOOR



GROUND FLOOR



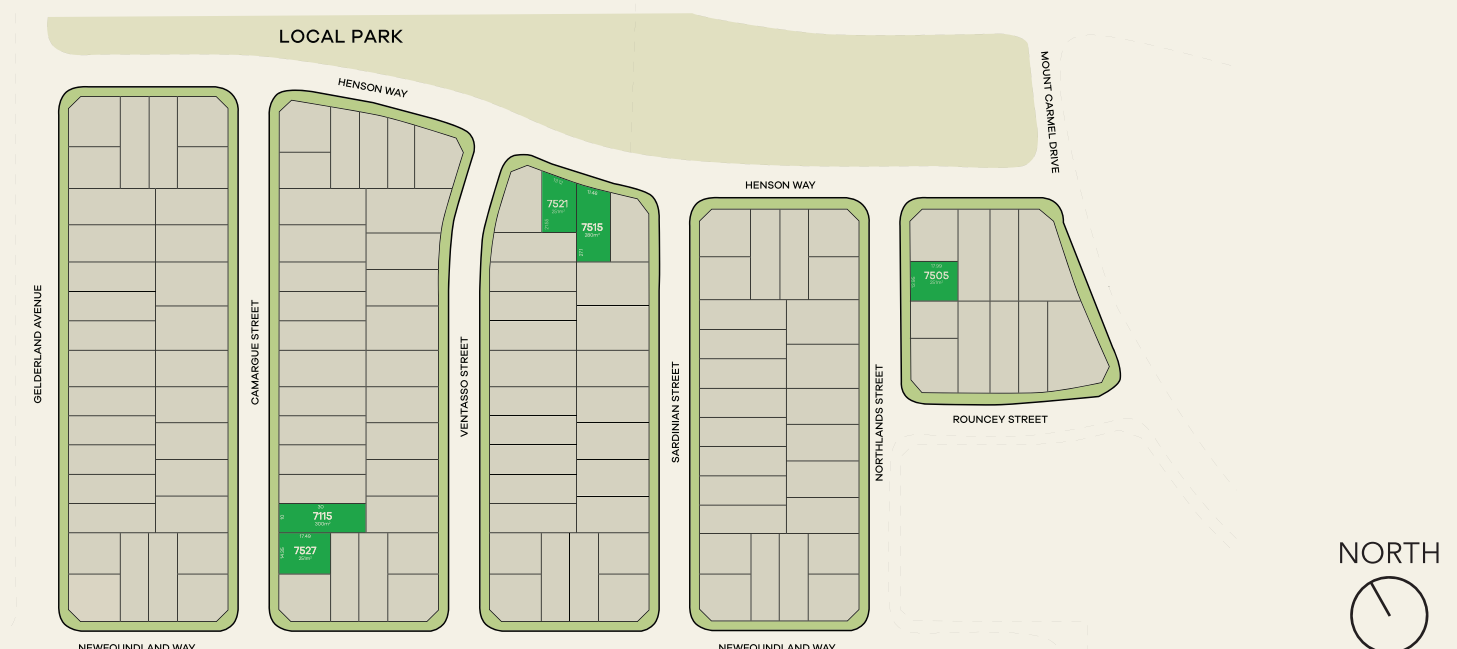


Artist's Impression

FREE UPGRADED ITEMS

- **Landscaping** (Excavation, Soft/Hard Landscape, Fencing, Retaining Walls, Clothesline)
- **Ducted A/C**
- **Video & Audio Intercom**
- **2,600mm Ceiling** (G Floor)
- **2,340mm Doors** (G Floor)
- **2,340mm Front Door**
- **Extra 1 x Double Power Point in All Bedrooms**
- **LED Downlight** (Not in Bedrooms)
- **20mm Stone Benchtop** (Kitchen/Bathrooms)
- **Dishwasher**
- **Cold Water Point to Fridge Space**
- **Semi Frameless Shower Screens**
- **Fly Screen**

STAGE PLAN



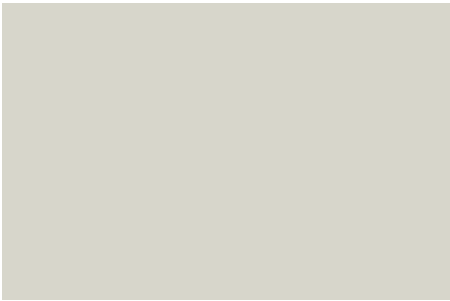


EXTERNAL FINISHES

This colour scheme is designed to create a chic point of difference to your home. The contrasting hues of light and dark accentuate the clean lines of the facade, and bring a calming balance to the design.

- A Fascia and Window Frames**
Surfmist®
- B Bricks**
PGH – Gibson
(Off White Mortar, Ironed Joint)
- C Colorbond® Roof**
Monument®
- D Panel Lift Garage Door**
Basalt®

EXTERNAL FINISHES



Fascia & Window Frame
Surfmist®

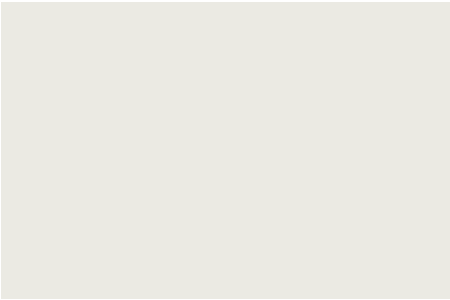


Bricks
PGH Gibson
(Off White Mortar, Ironed Joint)

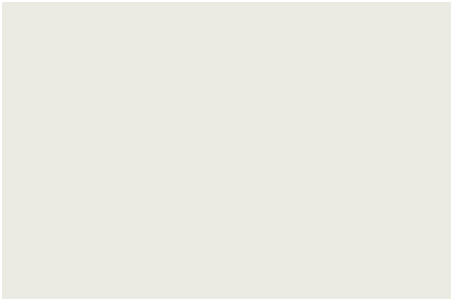


Slimline Panel Lift Garage Door
Basalt®

EXTERNAL COLOURS



Double Storey: Cladding
Dulux Whisper White B18
(Facade Dependant)



Painted Timber Posts
Dulux Whisper White
(Vogue & Deco Facade only)



Front Door
Dulux Heifer P14B2



Driveway
Charcoal

ROOFING



Colorbond® Roof
Monument®



Gutter
Monument®



Artist's Impression

INTERNAL FINISHES

KITCHEN

This colour scheme is a contemporary architectural palette that creates mood and interest.

The dark grain cabinetry with the ice snow benchtop is designed to work cohesively with the greys to achieve a tonal gradient.

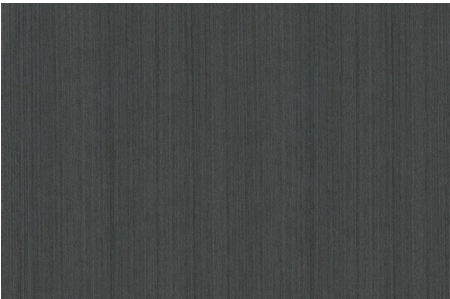
A Cupboard colour
Melamine Cavia Lini Matt

B Benchtop
Laminate Argento Stone

C Kitchen Tiled Splashback
United White Gloss (182174)*

D Floor Tiles
Belga Grey*

KITCHEN & BATHROOMS



Cupboard Colour
Melamine Cavia Lini Matt



Caesarstone® Benchtop
Ice Snow™



Kitchen & Laundry Tiled Splashback
United White Gloss (182174)*

FLOORING & TILING

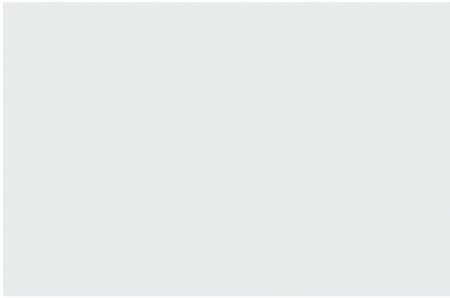


Main Floor and Wet Area Tiles
Belga Grey (main floor - 450 x 450)
(wet area - 300 x 300)



Carpet
Park Regis Bartlett 54/8793

WALLS & WINDOW FINISHES



Wall Colour
Dulux Lexicon PW1G9



All in One CARMEL ONE

- COMPLETE HOME -



ONE STEP

- House is approved and under construction.
- 10% now, 90% when you move in mid 2024.
- No interest nor progress payments during construction.



ONE PRICE

- Guaranteed fixed price with free upgraded items.
- The design and specification are selected by professionals.



ONE CONTRACT

- All in one single contract for easier finance approval.
- Fully completed landscaped home.

1800 227 635
thehillsofcarmel.com.au/carmel-one/



The particulars detailed herein and in associated marketing material are of general nature and DH Box Hill Pty Ltd does not accept any responsibility for any inaccuracies or omissions with respect to descriptions, dimensions, and images which are merely for illustrative purposes. Prospective purchasers should make their own enquiries as to the details of the development which may be subject to change without notice. Any information contained in this brochure and associated marketing material should be read subject to the terms of a Contract of Sale. This brochure was produced by DH Box Hill Pty Ltd ABN: 99 625 555 553 and is current as at July 2023.